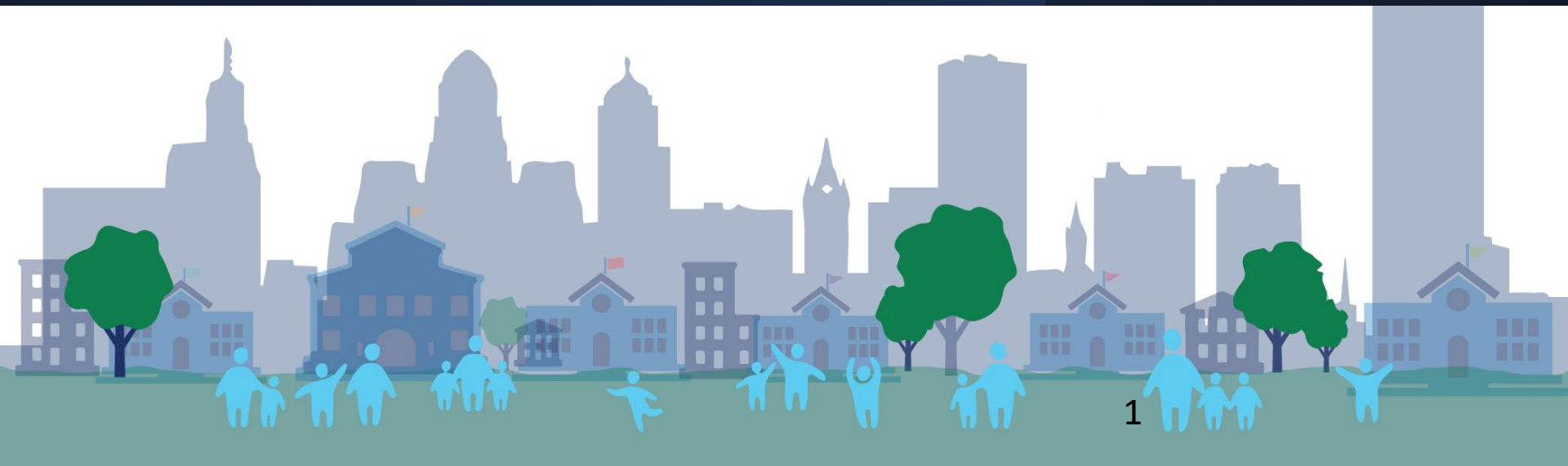


Exploratory Pilot for 3 Year-Old Pre-Kindergarten

*Ready Children, Ready Families,
Ready Schools, Ready Communities*



Dr. Tonja M. Williams
Superintendent of Schools

Anne Botticelli
Chief Academic Officer

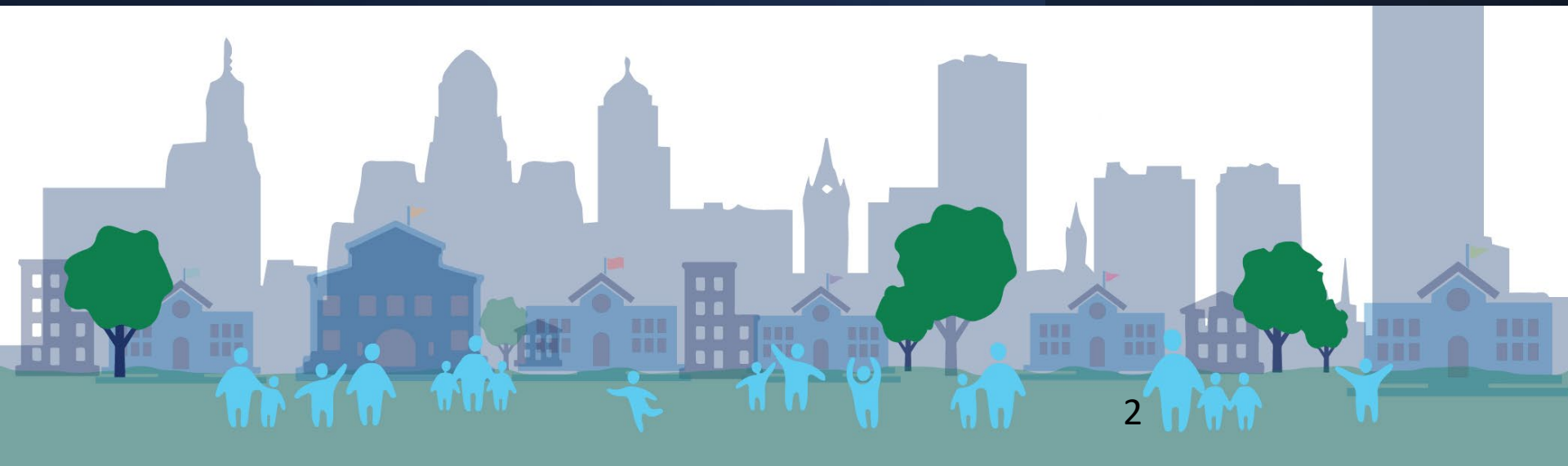
Dr. Will Keresztes
Chief of Administration, Public
Affairs and Planning

Ashley M. Young
Supervisor of Elementary
Education for BPS

Lindsay K. Krawczyk
Project Administrator for
Prekindergarten for BPS

David Rust
Chief Executive Officer for SYB

Gellenia Smallwood
Director of Parent & Family
Programs for SYB



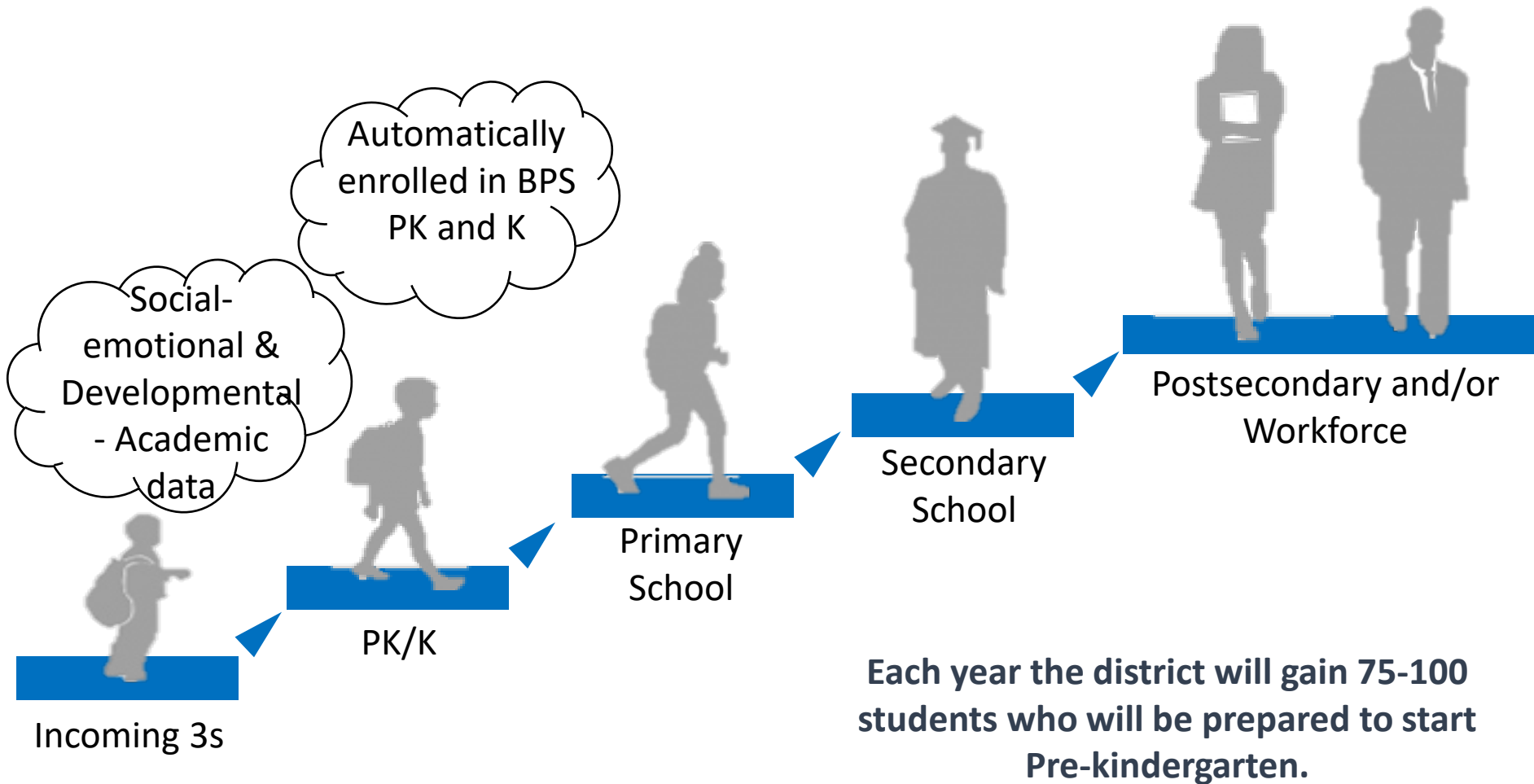
3Y Pilot Overview

Believe all children can learn...believe all families want to support their child's success...and we can seed the next generation of scholars.

- Proposed 3Y program
 - Launch 6-7 classrooms (70-105 scholars)
 - Locate in existing BP Community Schools
 - At least 1 classroom in each Board Sub-District
 - Full day program
 - Curriculum focused on academic and developmental milestones
 - Managed and staffed by Say Yes under the leadership of building administrators and in collaboration with the Department of Elementary Education



Cradle to Career Approach



Strategy



Create an environment that nurtures a sense of belonging



Engage scholars in purposeful learning



Strengthen alignment with early childhood interventions



Invest in the professional learning of school staff



Assess and continuously improve

Impact

Students will: enjoy learning, have confidence & be on track to thrive in Pre-K and beyond

Parents/Caregivers will feel empowered to support their child(ren), connected to the school community & be equipped to support learning at home

Teachers & staff will feel supported, engage in thoughtful interactions with students and families & build upon processes that encourage systems of cultural consciousness, caring coordinated supports

Outcomes

- Decreased educational gaps for students of color, DLL, exceptional learners & those in alternative living arrangements
- Improved student social emotional & physical health
- Increased student attendance & lower suspension rates
- Families complete their family-level goals
- **More students enter BPS Pre-K and Kindergarten on track to thrive**



Quality Improvement

Analyze and utilize process and outcome data in planning/decision making

- Child assessments, aggregated & analyzed at the classroom, school and program levels.
- Classroom/Teacher assessments
- Parental/Caregiver feedback



Funding & Sustainability



Short-term:

- Erie County day care subsidy
 - \$245/wk X 100 students = \$1,000,000.00 income
- BPS ESSER support for 3 years
- Ralph C. Wilson, Jr. Foundation
 - 3 year ASQ screenings

Long-term:

- Erie County day care subsidy
 - Expanded subsidy allocation & scholarships
- UPK grants
 - Universal 3Y, UPK expansion dollars, Blended/Braided Title Funding

Next Steps

Dr. Will Keresztes

Chief of Administration, Public Affairs and Planning



Q&A



Board of Education

Mr. Louis J. Petrucci, President and Park District Board Member

Dr. Kathy Evans-Brown, Vice President of Student Achievement and East District Board Member

Dr. Ann Rivera, Vice President of Executive Affairs and Board Member-at-Large

Lawrence Scott, Board Member-at-Large

Terrance Heard, Chairman of Educational Support Committee and Board Member-at-Large

Sharon Belton-Cottman, Ferry District Board Member

Hope Jay, North District Board Member

Jennifer Mecozzi, West District Board Member

Paulette Woods, Chairperson of Finance and Operations Committee and Central District Board Member

Jasmine E. Cameron, Student Board Member

Dr. Tonja M. Williams, Superintendent of Schools

