

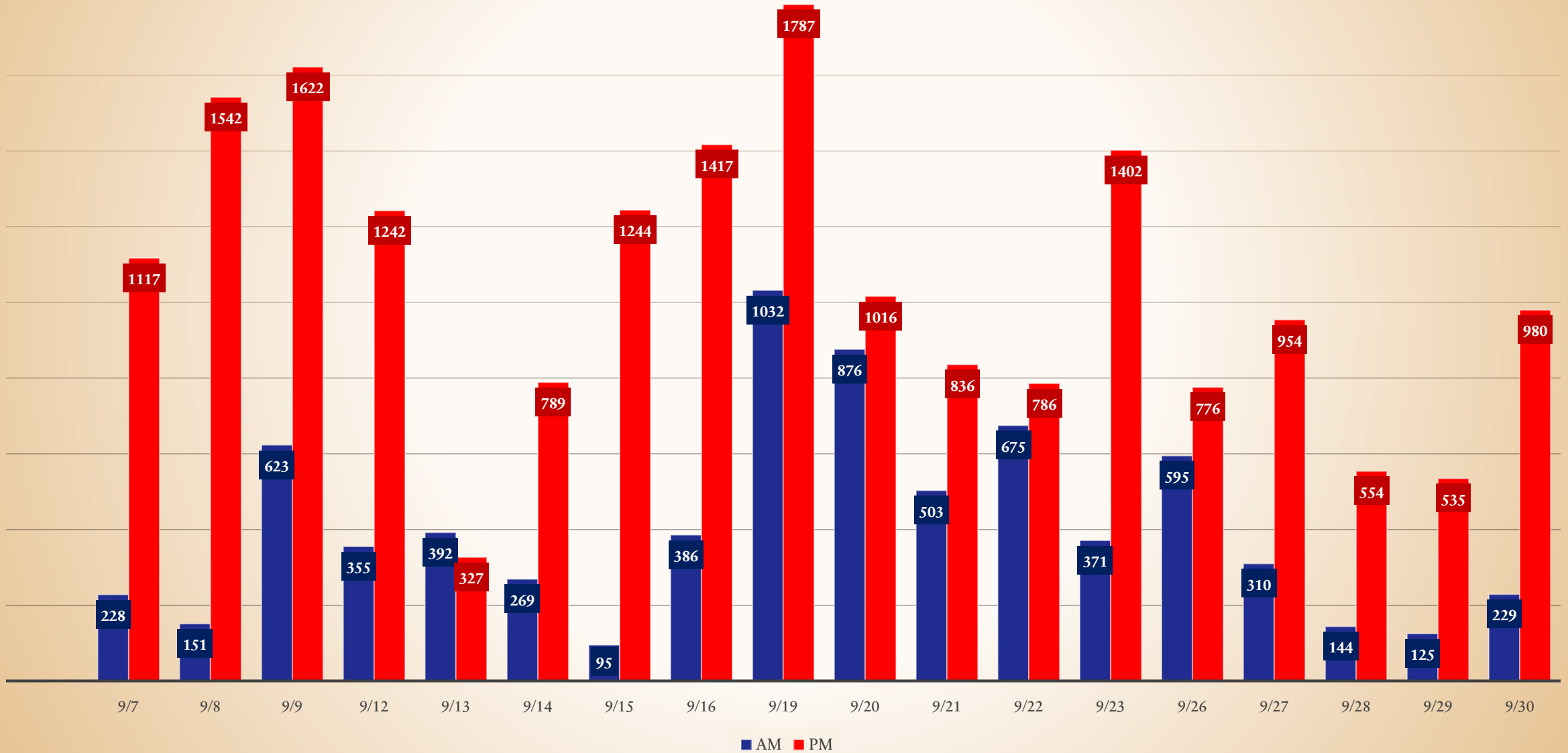
# **TRANSPORTATION UPDATE**

David Hills, COO

# DATA FROM LAST YEAR

- This is AM and PM
- 36 sites out of 117 were impacted over 100 times by the driver shortage.
- 9 were non-BPS programs
- 27 were BPS Schools
- The top 10 impacted BPS Schools were 45, 74, 3, 156, 89, 43, 94, 30, 93, 84
- 41 out of 472 bus routes were uncovered 50 or more times.

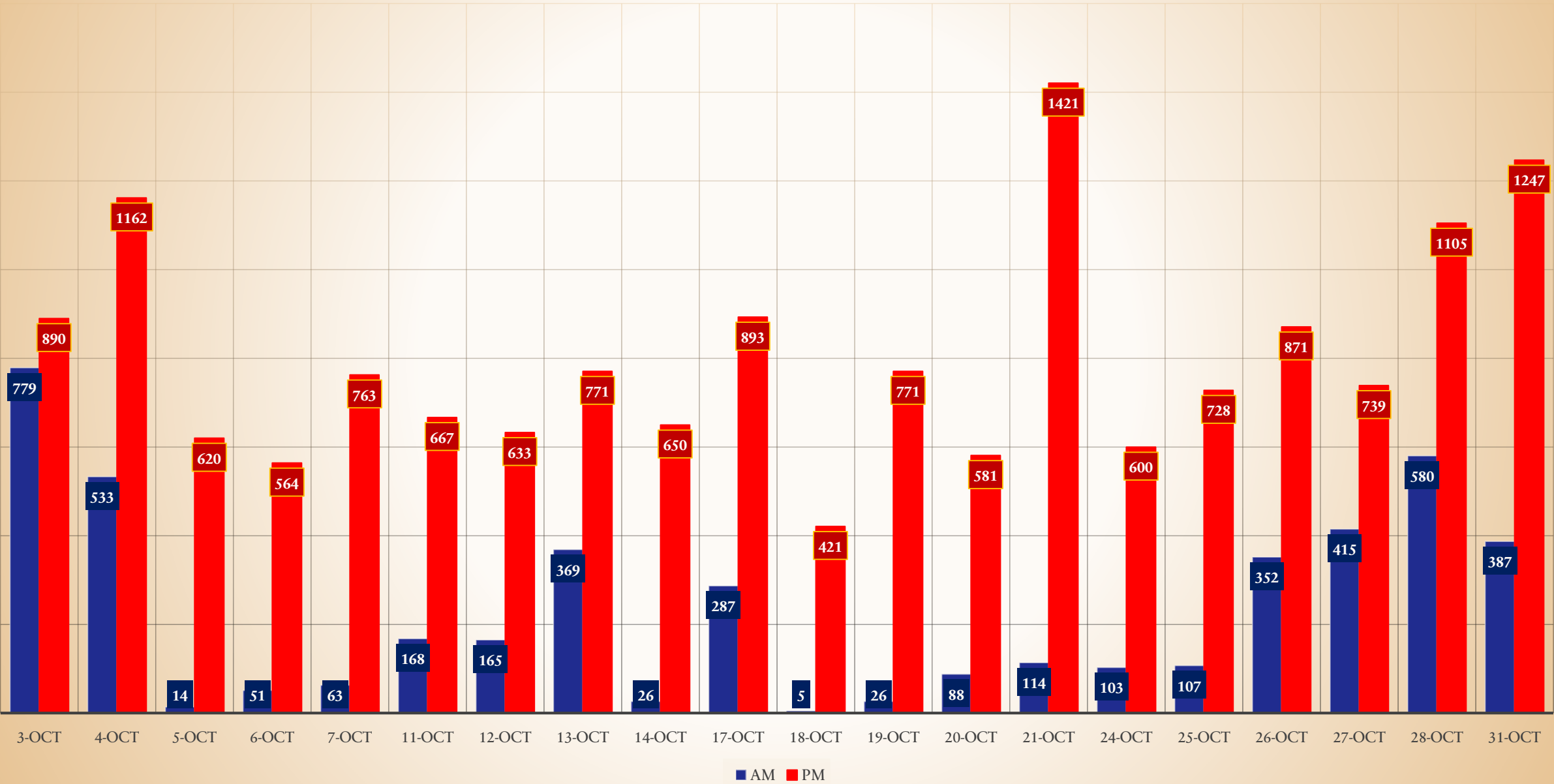
## Students Impacted by Driver Shortage in September



# DATA FROM SEPTEMBER

- The top impacted (Over 10 uncovered routes) BPS Schools for AM were 17, 42, 54, 84. There are also 2 non BPS sites at this level.
- The top impacted (Over 10 uncovered routes) BPS Schools for PM were 18, 19, 30, 42, 43, 45, 48, 53, 64, 79, 81, 84, 89, 94, 97 and 302. There are also 3 non BPS sites at this level.

# Students Impacted by Driver Shortage in October



# DATA FROM OCTOBER

- The top impacted (Over 10 uncovered routes) BPS Schools for AM were 84, and 45. There was also 1 non-BPS sites at this level.
- The top impacted (Over 10 uncovered routes) BPS Schools for PM were 3, 19, 30, 32, 43, 45, 48, 54, 64, 72, 79, 80, 89, 94, 305. There are also 4 non-BPS sites at this level.

# ELEMENTARY ONLY HALF-HOUR

- 7:30 a.m. starts for schools 6, 19, 33, 76, 64, 67, 79, 84, 92, 93, 95, 196, 156, 192, and 195. This would impact 15 schools including 7564 Elementary students and 1501 High School students at the three 5-12 schools (City Honors, BAVPA, and Olmsted #156).
- 8:30 a.m. starts for schools 30, 31, 37, 45, 50, 54, 59, 59A, 61, 65, 69, 72, 82, 94, and 99. This would impact 15 Elementary schools including 8099 Elementary students.
- 9:30 am starts for schools 3, 17, 18, 27, 43, 48, 32, 53, 69, 74, 80, 81, 89, and 97. This would impact 14 schools and include 8118 Elementary students.



# BENEFITS

- The savings will cover the shortfall in drivers.
- Predictable and consistent coverage.
- Students will not, in normal conditions, be picked up before 6:30 a.m. or dropped off after 5:30.
- Routes would be 50 minutes.
- Bus loads would be less.
- Discipline Issues would be reduced.
- Additional capacity for field trips, athletics and other irregular bus use.
- This would leave High Schools (beyond our 5-12 schools) on their same schedule. Adjusting all High Schools would lead to further savings.



# QUESTIONS?

